



# SRI SIVANI COLLEGE OF PHARMACY

(Under the Management of Sri Sivani Educational Society, Srikakulam)  
(Estd.2007, Approved by PCI-New Delhi and Affiliated to JNTU, Gurajada-Vizianagaram)  
N.H-16, Chilakapalem Jn., Etcherla Mandal, Srikakulam Dist - 532402.

## DUMB CANE

**BOTINICAL NAME:** *DIEFFENBACHIA*

**FAMILY:** Araceae

**SYNONYMS:**

**ENGLISH:** Dieffenbachia

**HINDI:** Goonga bent

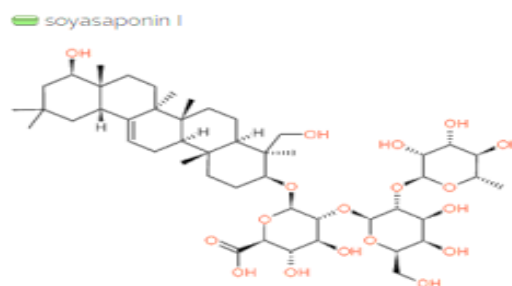
**TAMIL:** Ūmaikarumpu

**TELUGU:** Mūgaceraku



**CHEMICAL CONSTITUENTS:**

- ❖ All parts of Dieffenbachia contain irritant toxins including calcium oxalate needles (raphides) and oxalic acid and possibly saponins, glycosides, alkaloids, proteolytic enzymes, protein-like substances and cyanogenic glycosides.



**USES:**

- ❖ Purify indoor air
- ❖ Analgesic
- ❖ Aphrodisiac
- ❖ Caustic
- ❖ Contraceptive
- ❖ Cyanogenic
- ❖ Insecticidal
- ❖ Rodenticide
- ❖ Vesicant
- ❖ Variegated leaves, not flowers, and also for its ability to purify indoor air.